

Announcing the
7th SW P450 Meeting

May 12 - 14th, 2008

Camp Allen Conference & Retreat Center

<http://www.campallen.org/>

18800 FM 362

Navasota, Texas 77868

Please Visit our website for:



* Program Information *

* Registration *

* Abstract Submission *

<http://www.SWP450.org>

email: swp450@swcp.com

Registration and Abstract Submission will Open: **Dec. 10, 2007**

Registration and Abstract Submission Deadline is: **Feb. 28, 2008**

New Registration Procedures for 2008!

Registration:

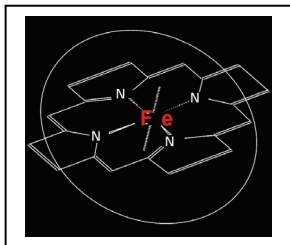
Includes registration, accommodations, and all meals and social events:

	<u>Single Occupancy</u>	<u>Double Occupancy</u>
<u>Early Registration</u> (by Dec. 31, 2007)	\$300.00	\$240.00
<u>Regular Registration</u> (by Feb. 28, 2008)	\$330.00	\$270.00

'The Best Little P450 Meeting in the Southwest'

Symposium Synopsis: The purpose of this now 7th Annual, three-day Symposium is again to provide a forum for the exchange of information among scientists who study cytochromes P450 within a variety of disciplines utilizing a broad array of approaches. The Symposium is intended as an informal and affordable session to share information, goals, and problems, as well as to seek solutions and collaborations. Attendance at the meeting is limited to 70 participants due to room availability at the conference site. Graduate student and postdoctoral participation is strongly encouraged, and registration costs are accordingly held to a minimum. The program will consist of a keynote address by **Dr. Stephen G. Sligar, the I.C. Gunsalus Professor and University Scholar of the University of Illinois at Urbana-Champaign: "Solving Mechanistic Questions of Cytochrome P450 with Nanotechnology"**. There will also be multiple sessions of 30-minute invited research presentations encompassing the general areas of the structure, function and regulation of mammalian, bacterial, yeast, marine, mitochondrial, insect, and plant P450 research as well as extended evening poster sessions to facilitate information exchange and interactions among all participants. The meeting also features extensive break and social events, informal discussions and networking opportunities.

Our meeting which began as a southwest regional meeting has now expanded to include P450 scientists from across the entire country. This meeting is meant to be informative, in a relaxed setting, with extensive opportunities for participation from students and post-doctoral fellows. The meeting focuses on all aspects of P450 enzymes, their redox partners, their function, expression and regulation in all biological systems.



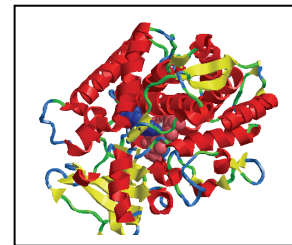
7th SW P450 Meeting

May 12 - 14th, 2008

Camp Allen Conference & Retreat Center

<http://www.SWP450.org>

<http://www.campallen.org/>



The program for the 7th Southwest P450 meeting will consist of a Keynote address, twelve 30 minute platform presentations, four 15-minute student presentations, an evening poster session, and several social events. **ALL PARTICIPANTS ARE REQUESTED TO BRING AT LEAST ONE POSTER TO THE MEETING.** This may be a poster previously presented at another recent meeting, but we would like to engage all meeting participants in the poster session and to generate discussions and new collaborations, an important aspect of this informal meeting. There will be awards for the best student platform and poster presentations. Attendees are welcome to bring multiple posters in order to represent various projects in their labs.

7th Southwest P450 Meeting Registration Information and Forms (Meeting registration includes accommodations and meals). Due to space limitations, registration is limited to the first 70 registrants, and rooms will be assigned on a "FIRST COME FIRST SERVE BASIS!" Early Registration Deadline, Dec. 31, 2007. Registration Deadline, Feb. 28, 2008. (see below for information, and visit the SWP450 website).

Travel to 7th Southwest P450 Meeting: Camp Allen is located northwest of Houston, approximately a 1.25 hour drive from Houston International Airport. See the Camp Allen website for driving instructions. Camp Allen offers a limited shuttle service from Houston International Airport by advance reservation only. <http://www.campallen.org/>, <http://www.campallen.org/html/map.aspx>.

Abstract Submission (Platform Presentations and Posters): Abstracts for both posters and platform presentations must be single spaced in 12 point Arial (or a similar sans serif font). The abstract should begin with a title and then list the authors and their affiliations. Abstracts should be formatted to fit on a single standard 8.5x11 in page with 1 inch margins on all sides. Abstracts may include figures, however they must be in black and white, we will be unable to reproduce color figures. Authors should submit the title of their poster/platform presentation with their registration form, and email their abstract to both: swp450@swcp.com and cmarcus@salud.unm.edu as soon as possible but no later than April 1, 2008. If you do not receive a confirmation email within 7 days of submission, please contact the meeting organizers. Please use **"SWP450 ABSTRACT SUBMISSION"** as the subject line when you email your abstracts. Abstracts should be submitted as email attachments (not in the body of the email) as both a WORD document and as a PDF file. We plan to reproduce the PDFs exactly in the Program to be distributed to attendees when they arrive at the meeting. Students wishing to make a 15 minute oral presentation should request this option in the body of the email. The student oral presentations may recapitulate a poster.

Speaker information: All presentations should be made using Powerpoint. A slide projector will not be available. Presenters should bring their presentations on a USB memory device, or on their own laptop computer which can be connected to the LCD projector.

Poster Guidelines: Posters may be any size typically presented at meetings, up to 4" x 6". Poster boards will not be available at the meeting site – posters must be pinned to the walls using standard poster display pins or taped to the walls. Meeting participants should bring their own pins and tape. Since poster boards are not available, it is highly recommended that poster presentations should consist of single large posters, not multiple panels of information.

REGISTRATION INFORMATION:

Registration for the meeting includes registration for all scientific sessions, accommodations and all meals and social events. This includes: dinner Monday evening, the Monday evening Mixer, Breakfast, Lunch and Dinner Tuesday, the Tuesday Mixer, and Breakfast and Lunch on Wednesday. Accommodations are for Monday and Tuesday nights, either single occupancy (1 bed) or double occupancy (2 beds). **More information is available at: <http://www.campallen.org/>**

NEW FOR 2008: This year we were able to reserve additional rooms, especially more single rooms, which sold out quickly in 2007. HOWEVER, we must commit financially to the extra rooms by the beginning of 2008, and release the extra rooms if it appears registrations will not increase over 2007. **PLEASE REGISTER EARLY!!!! EARLY REGISTRATIONS WILL BE AT A REDUCED RATE.** Payments may be made via **PAYPAL**, or via check or money order. **To qualify for early registration, Paypal payments must be credited by Dec. 31, 2007. Checks and money orders must be postmarked by Dec. 31, 2007 (USPS or courier).** (If you wish to register early, but for some reason cannot make payment by Dec. 31, please contact the organizers for assistance at the email addresses below).

	<u>Single Occupancy</u>	<u>Double Occupancy</u>
<u>Early Registration</u> <u>(by Dec. 31, 2007)</u>	<u>\$300.00</u>	<u>\$240.00</u>
<u>Regular Registration</u> <u>(by Feb. 28, 2008)</u>	<u>\$330.00</u>	<u>\$270.00</u>

Rooms will be assigned on a “first come, first served basis”

REGISTRATION PROCEDURE:

1. Download the interactive PDF registration form from the SW P450 website.
2. Complete all fields in the interactive PDF registration form.
3. Print a copy of the PDF for your records/and or save on your computer.
4. **EMAIL your completed registration form to both of the following email addresses: swp450@swcp.com and cmarcus@salud.unm.edu, using “**SWP450 REGISTRATION**” as the subject line. You should receive a confirmation within a week indicating receipt and acceptance of your registration and **ROOM ASSIGNMENT**; if not, please contact the organizers at the email addresses above or by phoning 505-272-3848. (IF we cannot accommodate your selection of room choice, we will contact you with alternatives).**
5. **PAY YOUR REGISTRATION FEES:**
 - Submit your credit card payment by Paypal (use the link on the SWP450 website). If you encounter problems with Paypal, please contact the organizers.)
 - OR: mail your check or money order (Payable To: “Society For The Study Of Cytochromes P450”) To:

SW P450 c/o: Craig Marcus, Ph.D.
College of Pharmacy
MSC09 5360
1 University of New Mexico
Albuquerque, NM 87131-0001